



FumeSafe™

What to specify...

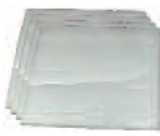

1. Model

3. Pre-filter


4. Main filter

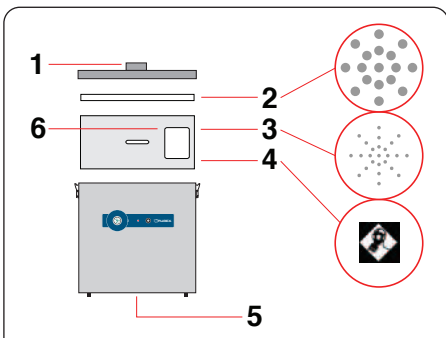
1		3-15 Tip Fume Extraction Unit	
Voltage	230V ±10% or 120V ±10%		
Vacuum Control	072200		
Wattage	0.45 kW		
Frequency	50Hz / 60 Hz		
Cabinet height	493 mm		
Cabinet width (not inc hose)	471 mm		
Cabinet depth (not inc hose)	430 mm		
Cabinet weight (inc filters)	26 Kg		
Construction	Stainless Steel		
Construction	Precision engineered brushed stainless steel units. High performance continuous run brushless motors. Quick and simple to relocate.		

**Auto Sensing
Dual Voltage
Blower Works
Anywhere in
the World!**

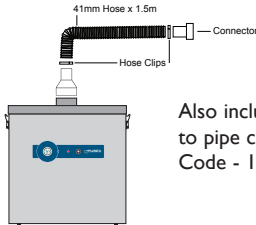
3		Replacement Pads	
		Pre Filter Options: F8/F9 Pack of 4	Code: 200098
Pre Filter	Exhaust Filter	Exhaust Filter Options: Single	Code: 200053



4		Replacement Main filter	
	Options: HEPA/Chemical (std) Chemical or Chemical Special HEPA/Chemical Cleanroom Solvent Lock	Code: 110531 110532 110542 110533 110541	



Pipe kit (100165) includes 32mm Ø:	Code:
6 x 1.5M x 32mm pipe (3 pre drilled)	500050
4 x 90° bends	500080
2 x Swept T's	500100
4 x Straight connectors	500060
2 x End caps	500120

 Also includes machine to pipe connector hose
Code - 100170



Legend:

- 1) Air inlet - 80mm safe seal.
- 2) Prefilter.
- 3) Main Filter (HEPA location).
- 4) Main Filter (Carbon location).
- 5) Clean air returned to workplace.
- 6) Filter identification label.

Supplied with 3 universal iron kits - 300001

Controls

Visual and Audible Filter Blocked Warning
Alerts the operator when a filter starts to block so that a replacement filter can be acquired and downtime can be avoided.

Controls & System Features...

- Speed Control
- Dual voltage brushless blower
- Low capital and running costs
- Quick change pre-filters deliver longer filter life
- Submicronic (HEPA) filtration removes 99.997% of particles down to 0.3 microns
- Activated carbon filtration removes harmful gas
- Simple to install and quiet in operation
- Easy to relocate
- Precision made from stainless steel
- Filter blocked alarm and LED

Includes:

- 1 x Main filter
- 1 x Pre-filter pad
- 1 x Exhaust filter
- 1 x Power cable
- 1 x Connection kit
- 1 x Pipework kit
- 3 x Universal iron kits

Accessories

Please see the accessories section at the back of this brochure.