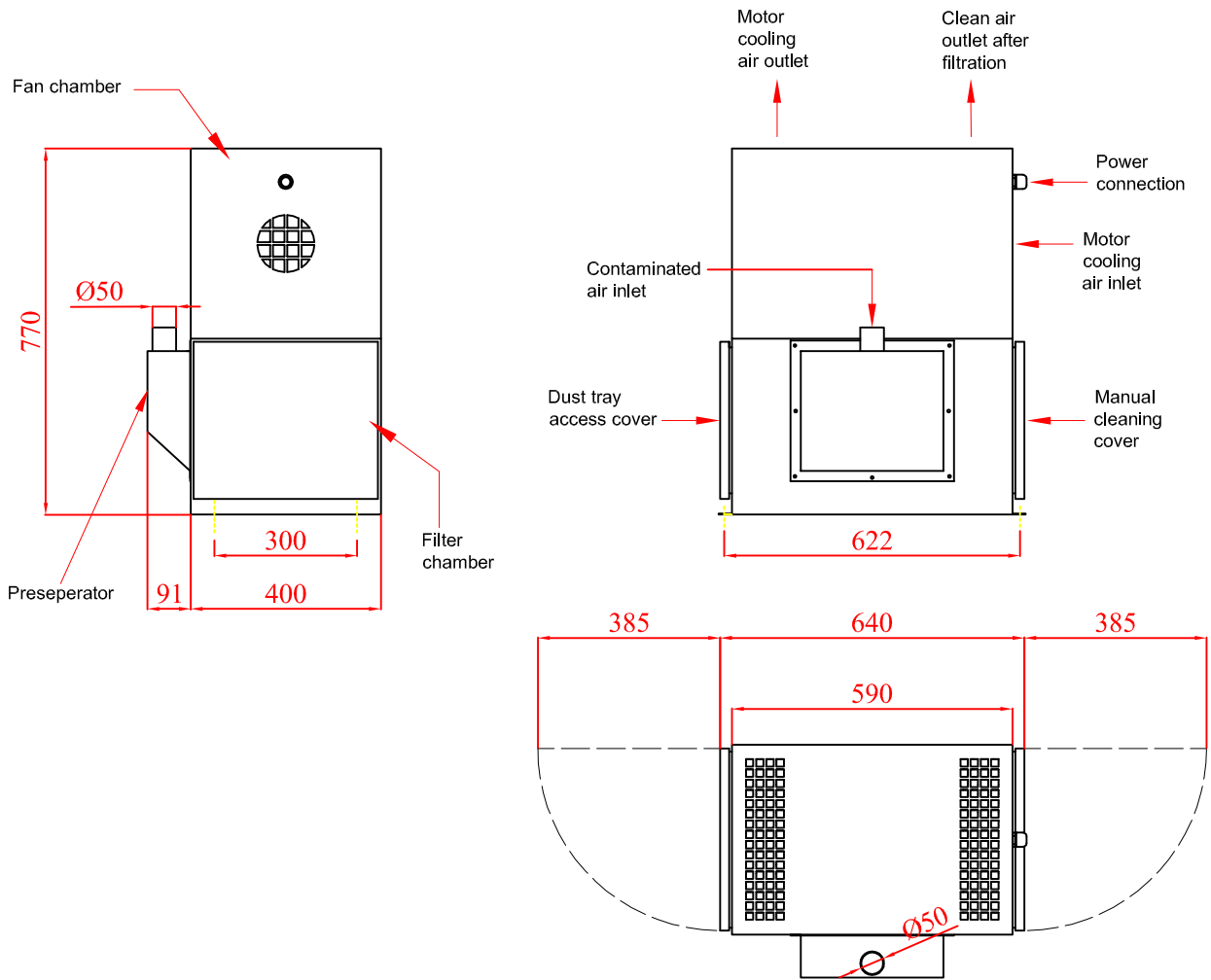


TECHNICAL SPECIFICATIONS



- Electrical Connection 220/230V, 1P N PE, 50Hz.
- One-stage high flow fan with brushless motor.
- Filter unit start/stop functions are controlled by the control panel of the plasma cutting unit.
- Cartridge filters are made of polyester non-woven with PTFE membrane. They arrest 0.2-2 micron particles with %99.9 efficiency. Dust Class M acc. to EN 60335-2-69.
- Easy maintenance with manual filter cleaning. No need to disassemble the cartridge filter for manual cleaning. Just clean the filter cartridge with an air-gun at 4-5 bar, through the "Cleaning Cover" on the machine.
- Standart pre-seperator minimizes the fire risk.

TYPE	CAPACITY (m ³ /h)	MOTOR (kW)	FAN PRESSURE (Pa)	FILTER SURFACE (m ²)	NUMBER OF CARTRIDGE FILTER	WEIGHT ⁽¹⁾ (kg.)
PLK-150	150	1.5	12 500	4.0	1 adet	57

⁽¹⁾ The center of gravity is approx. 480mm high from the ground level.

⊗ Ongoing product development may subject our specifications to alteration without notice.